

Preferred fields of application:

The single acting telescope cylinders are mainly used as tilting cylinders for agricultural trailers. It is necessary to use a stroke limiting valve to prevent the cylinder from reaching the enposition under pressure. Maximum tilting angle is 30°

Principle of konstruktion:

The specified types of hydraulic telescope cylinders are based on the construction principle of plunger cylinders. Tilting bolts with a gimblar are fixed on the ground tube. A bore for mounting is forseen on the end of the smallest rod. The stroke of the rod ids limited by retaining rings. The nex wiping, sealing and guiding system guarantees less friction an an outstanding service life.

Maximum operating speed:

Up to 0,1 m/s

Sealing elements:

Polyurethan

Temperature range:

min. -10 ° Celsius
max + 80 ° Celsius.

Hydraulic pressure medium:

Standard mineral oils, biological oils (only after reales by WEBER-HYDRAULIK)

Nominal pressure:

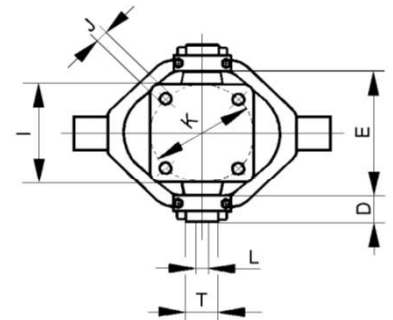
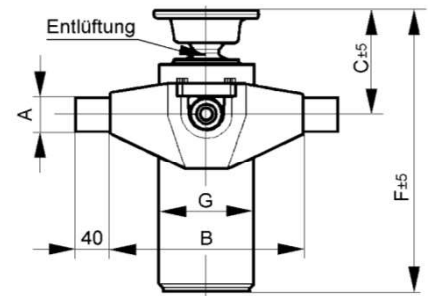
Working pressure 200 bar.
Test pressure 220 bar.

Permissible pressure force:

Permissible pressure force equalnt maximum load of gimbal and must not be exceeded (Page 5)

Rod specification:

the single rod-stages are chrome-plated


Advantages:

Certificate according to ISO 9001, surface primer coated, rod-satges chrome plated, Entlüftungsschraube ab Kolbendurchmesser 75 mm aufwärts.

Type: TZE 5/6P	stroke in mm ± 25 mm	Lifting power								Dimensions												Oil volume in l	Weber ID. Nr. incl. Cardle													
		Extensions								Gimbal				Cylinder																						
		1,6 t	3,2 t	5,7 t	8,8 t	12,7 t	17,3 t	22,6 t	30,8 t	40,2 t	Gimbal Nr.	max. load in t	±1,5 mm	A	E	C	D	B	F	G	I			J	K	L	M	N	O	P	Q	R	S	T	U	V
3208	850	32	45	60	75	90	105	120	140	160	4	8	40	230	230	38	141	328	110	95	13,5	100	M16x1,5	40	24,0	3,4	1809814									
6018	1850										5	12	45	230	180	38	169	559	145	125	14,5	125	M22x1,5	40	59,7	14,5	1809830									
7530	3000										6	16	45	280	180	40	189	792	165	125	14,5	125	M22x1,5	40	100	33,0	1809857									

Grey marked types only after prior consultation referring minimum quantity and lead time